



Kuwana Sightseeing Pamphlet

Free Pamphlet

THE REAL SPIRIT OF JAPAN

Kuwana, a compact city where you can enjoy the real spirit of Japan

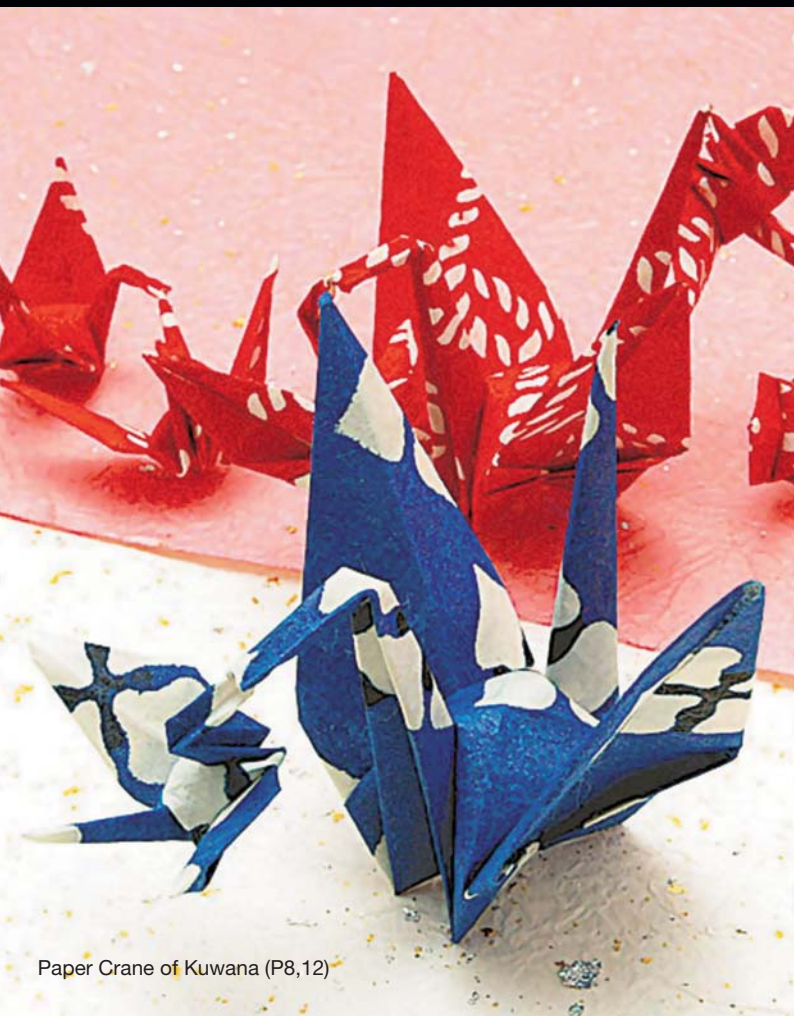


KUWANA



Ishidori Festival (P4,P9)

Kuwana, one of Japan's most thriving and popular riverside districts, is a city



Paper Crane of Kuwana (P8,12)



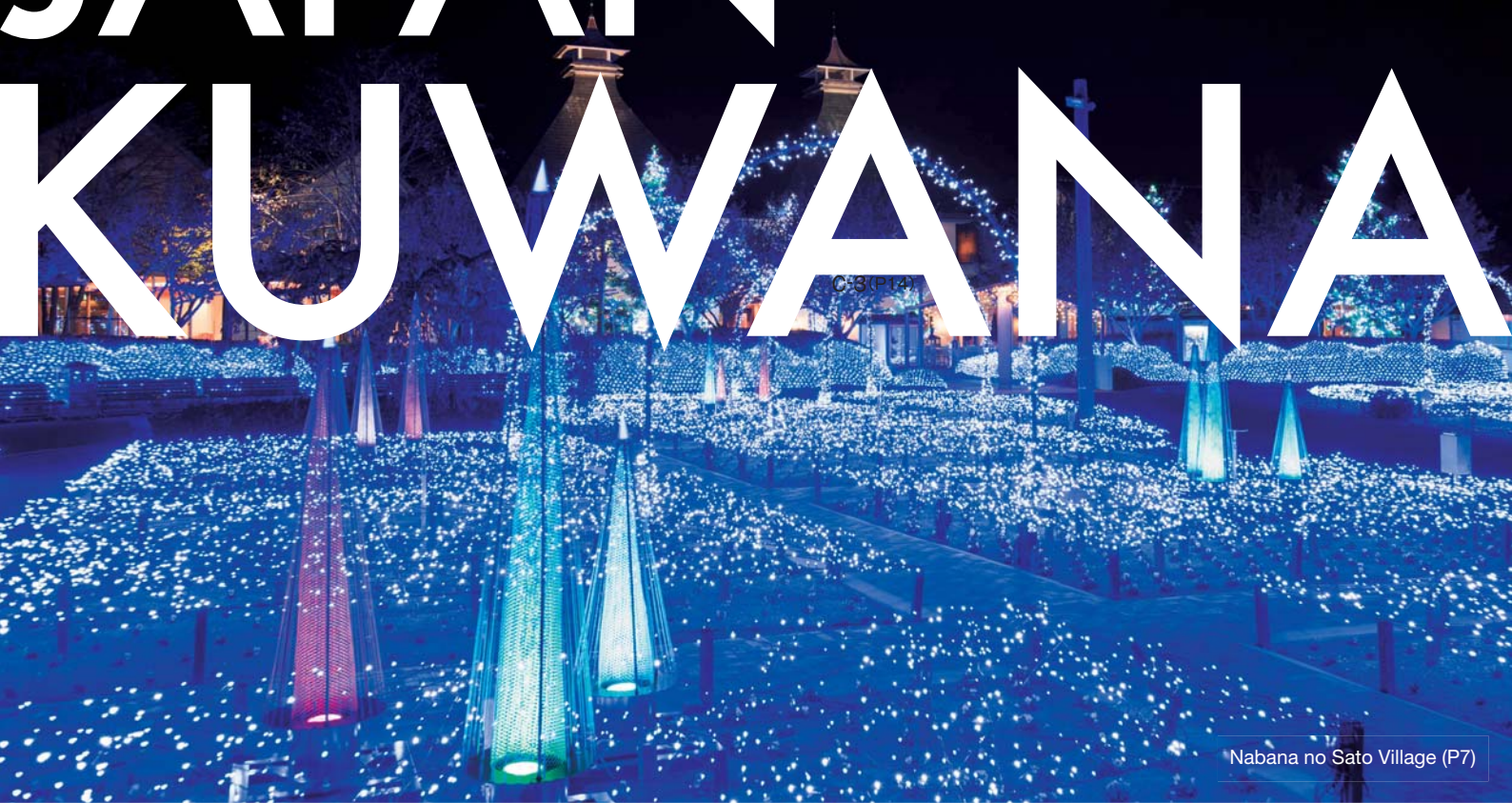
Clams (Hamaguri) (P10)



Rokkaen Garden (P4,6,8)

where you can experience real Japan rich both in tradition and innovation.

JAPAN KUWANA



Nabana no Sato Village (P7)

A Walk Around Kuwana

take a stroll

To take in the sights around Kuwana, we recommend that you enjoy a stroll around the city with Kuwana Station as your starting point. Enjoy walking around at various locations, from famous tourist spots to shopping streets!



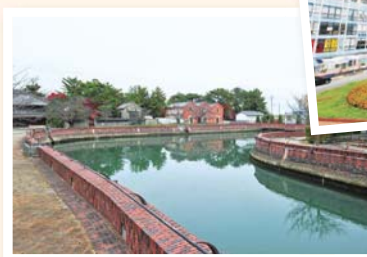
1 Kuwana City Products Tourist Information Center

MAP D-2 (P15)

This center is full of useful sightseeing information such as pamphlets and maps. Kind staff will help you and give you informative recommendations!



Kuwana Station is the gateway to the city. Off we go!



The retro-style creek is lovely, isn't it?

2 Rokkaen Garden

MAP E-1 (P15)

This building which was built over 100 years ago is a popular tourist spot in Kuwana. It's the perfect place to enjoy architecture as well as the beautiful Japanese garden and some matcha green tea.



That watchpost looks like a castle!

3 Shichiri no Watashi Old Port & Banryu Yagura Scaffold

MAP E-1・F-1 (P15)

In the past, this was the gateway for people to cross over the river by boat, and even today a big wooden torii gate is still standing here. The scenery is impressive, like looking at an Ukiyoe (wood carving painting)!



Give the omikuji (fortune) a try!



4 Kasuga Taisha Shrine

MAP E-1 (P15)

This shrine has been cherished by the people of Kuwana for a long time. The big gate is fascinating! Drop in and pray for a safe and pleasant journey.

Statue of Tadakatsu Honda

MAP F-1 (P15)





This is actually a manhole cover. It looks like art!



7 Kuwana Machi no Eki

MAP E-1 (P15)

This shop sells food, sundries, arts and crafts and many other souvenirs made in Kuwana and neighboring areas.



Let me give it a try too!



5 Ishidori Museum

MAP E-2 (P15)

This is a museum where you can experience the "Ishidori Festival," a representative festival of Kuwana. It's a fun place to see the floats and try the Japanese drums and gongs used during the festival.



6 Teramachi-dori Shopping Street

MAP E-1 · E-2 (P15)

This street, lined with shops selling specialty goods of Kuwana, food, daily necessities, clothes, and other items, is also frequented by the local residents. The morning market is open on dates containing the numbers '3' or '8'.

Kuwana Walking Route



1 Rokkaen Garden MAP E-1 (P15)

Designed by Josiah Conder, the British architect of the diplomatic hub as Rokumeikan in Tokyo, Rokkaen is a superbly eclectic mix of Japanese and Western style architecture. A four storey tower is attached to Rokkaen's main Western building which looks out upon a slow-moving water pond garden that is designated as a national scenic spot. Completed in 1913, Rokkaen has been used as a set for many movies and dramas. It is a designated important cultural property.

Admission fee: ¥310 for visitors 16 and over
Opening Hours: 9:00-17:00 (Admission until 16:00)
Closed: Mondays (if a National Holiday, the following day will be closed), Dec. 28-Jan.3
Tel: 0594-24-4466



2 Tado Taisha Shrine MAP A-2 (P14)

The shrine is said to have been founded in the late 5th century and its object of worship was once Tado Mountain. In this place, the gods of industrial development and rain have been enshrined. Stemming from the belief since ancient times that the behavior of horses is a manifestation of divine will, the Ageuma Shinji is a famous sacred horse rite used to predict the success of the upcoming harvest.

Tel: 0594-48-2037
<http://www.tadotaisya.or.jp/>



3 Waju no Sato Village MAP C-2 (P14)

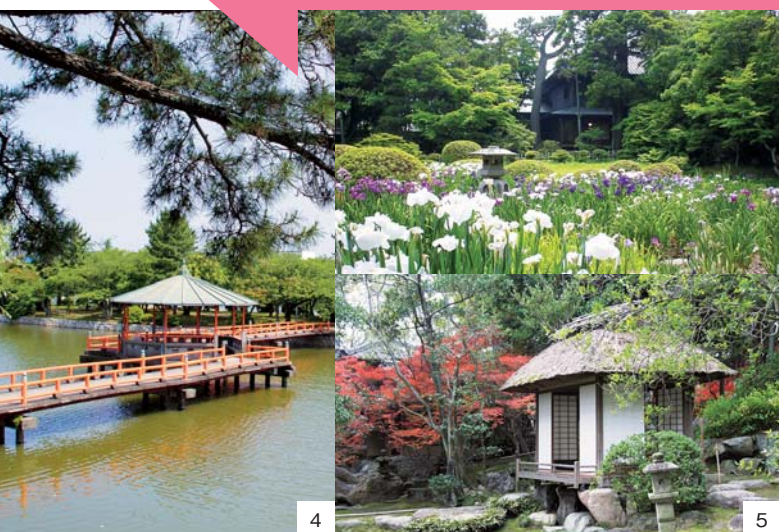
Designed around the theme of a "Waju," a settlement surrounded by banks to protect it from flooding, this complex introduces the history, culture and industry of the area. There are about 7,000 items in its collection, mainly people's tools but also old documents, paintings and other items.

Admission fee: ¥310 for adults
Opening Hours: 9:30-16:45 (Admission until 16:00)
Closed: Mondays (if a national holiday, the following day will be closed), 28th Dec. 28-Jan.4
Tel: 0594-42-0001



Explore real Japanese culture

Places where you can connect with Japanese traditions



4 Kyuka Park MAP F-1 (P15)

This garden was built in the ruins of the inner and outer citadel of the Kuwana Castle, a castle praised as the great castle on the kaido that was constructed in front of the sea by Tadakatsu Honda, one of the four Generals who served Tokugawa Ieyasu. It is a place of enjoyment and relaxation for visitors where sakura, azalea and irises blossom.

5 Moroto Garden MAP E-1 (P15)

A Japanese garden made as a retreat for the wealthy merchant, Hikozaemon Yamada, in the Edo period (1603-1876). In the Meiji period, Seiroku Moroto, founder and businessman, bought it and added the garden and mansion. You can enjoy irises in spring and maple leaves in autumn. Most of the buildings have been designated as important cultural properties.

Admission fee: ¥500 for adults (Open only in spring and autumn)
Tel: 0594-25-1004



6 Shichiri no Watashi Old Port MAP E-1 (P15)

This was once the only gateway to the sea route in Tokaido that was one of the old roads. It was called "Shichiri no Watashi," as the distance between Atsuta and Kuwana was seven ri, (shichi means seven) - which is about 27.5 km. The giant torii gate has been transported every 20 years from Ise Jingu shrine where it had been standing. In the vicinity, the Banryu Yagura scaffold has been restored and was founded for the monitoring of ship voyages.

7 Nagashima Resort MAP D-4 (P15)

This leisure complex has an amusement park, a jumbo sea-water pool, a hotel, and a natural hot spring. This complex is full of attractions such as open-air hot springs and Japan's most exciting and scary rides. It's a popular tourist spot where you can enjoy a whole day.

Tel: 0594-45-1111 (Mainline)
<http://www.nagashima-onsen.co.jp/>

8 Mitsui Outlet Park Jazz Dream Nagashima MAP D-4 (P15)

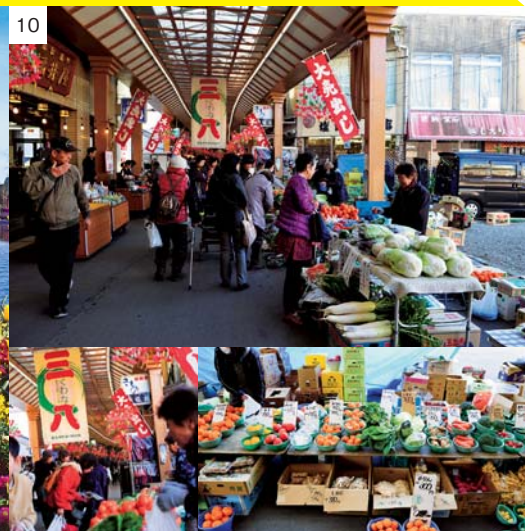
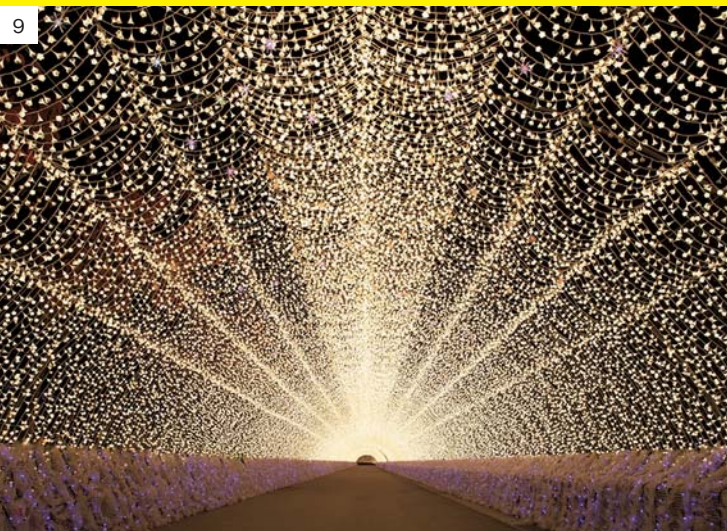
Directly linked to Nagashima-onsen Hot Spring, this outlet mall featuring about 240 stores is the largest of its kind in Japan. Both luxury brands and popular Japanese brands are available, as well as free Wi-Fi, and an indoor currency exchange machine. Over 100 duty free shops are available.

Tel: 0120-355-231 * Multi-lingual support available
 +81-3-5927-9321 (English)
<http://www.31op.com/nagashima/english/index.html>



Enjoy a real Japanese experience

Places where you can experience modern Japan



9 Nabana no Sato Village MAP C-3 (P14)

Enjoy seasonal flowers in the vast spread of a flower field. The begonia garden located inside the enormous 9,000m² greenhouse, and the winter illuminations - one of the biggest and most beautiful in Japan - are a must see.

Tel: 0594-41-0787
<http://www.nagashima-onsen.co.jp>

10 Sanpachi Market MAP E-1 (P15)

This famous morning market is held along the shop-lined Teramachi-dori shopping street every month on days containing the numbers "3" and "8". Local specialties and fresh farm produce are sold here at a reasonable price. Come and experience the atmosphere of a Japanese shopping street and have fun interacting with the locally-based shopkeepers.

Opening Hours: 9:00-12:00

Hands-on Experience

There are many places in Kuwana where you can experience authentic Japanese culture and also the industry of Kuwana. Feel the “real spirit” of Japan with all five senses!



Paper Crane Folding Experience

You can make origami, a traditional Japanese craft. A piece of paper changes its form into a beautiful three-dimensional impressive work of art! In particular, paper cranes in Kuwana are made using a single piece of paper to make a series of connected cranes which is rare even in Japan, making it the perfect gift.



Look!
I made this.



Rokkaen Garden

[Address] 663-5 Kuwana, Kuwana city ☎0594-24-4466 [Email] rokkam@intsurf.ne.jp
Closed: Mondays, No reservation required [Fee] ¥100 (1 sheet of origami) (Admission fee not included)
[Time Required] About 40 min. or more [Reception Hours] 9:00-16:00

MAP E-1 (P15)

Experience making Japanese confectionery



It is fun to try using
various tools!



Learn how to make wagashi (Japanese confectionery) from wagashi chefs at a shop specializing in making traditional Japanese sweets. Demonstrations of wagashi-making techniques by the craftsmen are a must see! You can eat in the shop or take the sweets with you.

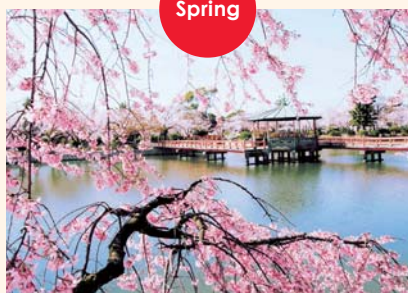
Eishoudou

[Address] 2-42 Chuo-cho, Kuwana city ☎0594-22-1668
Closed: Mondays, Reservation required
[Fee] ¥500 (2 types x 2 pcs)
[Time Required] About 60 min. [Workshop Hours] 13:00-17:00

MAP D-2 (P15)

A variety of seasonal events!

Spring



Kyuka Park Sakura Festival

In Japan we gather under cherry trees and enjoy watching the beautiful flowers in spring.
In Kyuka Park, when about 450 cherry trees bloom, entertainment and night light-up events take place.
Kyuka Park April 1-15

MAP F-1 (P15)

Spring



Goldfish Festival

The Mikoshi (portable shrine) is considered transportation for the gods. This In this festival, that children parade through town carrying various shapes of portable goldfish shrines on their shoulders. The area is crowded with a large number of people and street stalls selling goldfish and other kinds of items.
Chinkoku Shukoku Jinja Shrine May 2-3

MAP F-1 (P15)

Spring



Tado Festival Ageuma Shinji

This festival is a heroic ritual where young boys dressed as warriors ride up to a 2 m high wall on horseback and attempt to jump it. The success of the upcoming harvest is predicted according to the number of horses that are able to jump the wall.
Tado Taisha Shrine May 4-5

MAP A-2 (P14)



A chocolate fountain option is also available!



Strawberry Picking Experience

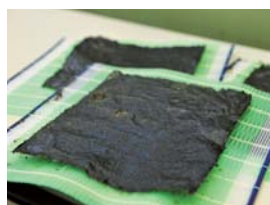
Pick strawberries that are grown in the greenhouse from December to May. Enjoy the high quality of sweet and beautiful Japanese strawberries. (all-you-can-eat for 30 minutes)



Tado Green Farm

[Address] 4132 Mizono, Tado-cho, Kuwana city ☎0594-48-7447
Open: daily Jan-May Closed: 2nd&4th Wed. Jun-Dec [website] <http://tado15.com/>
Reservation Required, Experience Fee & Opening Hours vary depending on the season. See the website for more information.
[Time Required] 30 min. or more [Reception Hours] 9:00-17:00

MAP B-2(P14)



Norisuki (Spreading and drying seaweed) Experience

Nori seaweed is used for sushi and is an important ingredient in many Japanese dishes. The Nagashima district of Kuwana city is located at the mouth of the Kiso Three Rivers and is a famous production area for good quality seaweed. Using the freshly harvested raw seaweed and "norisu," you can make your own unique nori by traditional manufacturing methods.

Waju no Sato Village

[Address] 1093 Nishikawa, Nagashima-cho, Kuwana city ☎0594-42-0001
Closed: Mondays, Dec. 28-Jan. 4
[Website] <http://www.waju.jp> Reservation not required
[Fee] ¥520 (souvenir included). [Time Required] 30 min.
[Reception Hours] 9:30-16:00

MAP C-2(P14)

Mandarin Picking Experience

The Tado district in Kuwana city is surrounded by mountains and spreads across a rustic, laid-back scenery. It is a tangerine farming area where lots of mandarins are grown. Popular for families and couples to easily experience harvesting.
Open: Mid-Oct.-late Nov.

Full of sweet and delicious tangerines!



Tado Mandarin Picking Farm (Kurumakyu)

[Address] 1531 Tado, Tado-cho, Kuwana city ☎0594-48-2066
Open everyday during applicable period, Reservations required
[Fee] ¥1,000 for adults (1 kg take-away pack of tangerines included)
[Time Required] 30 min. [Reception Hours] 9:00-14:00

MAP A-2(P14)

Vegetable Harvesting Experience

Enjoy the great outdoors as you pick fresh vegetables with your own two hands. The vegetables are safe as they are grown on traditional high ridges using hardly any agricultural chemicals.



A vegetable often used in Japanese cooking.



Waju no Sato Village

[Address] 1093 Nishikawa, Nagashima-cho, Kuwana city ☎0594-42-0001
Closed: Mondays, Dec. 28-Jan. 4
[Website] <http://www.waju.jp> Reservation not required
[Fee] ¥310 and up (souvenir included).
[Time Required] 20 min. [Reception Hours] 9:30-16:00

MAP C-2(P14)

Summer



Kuwana Riverside Fireworks

A unique fireworks display of the riverside city, launched from the sandbar of the river. Utilizing the length, width and depth of the river, the "underwater star mine" and "60cm diameter fireworks ball" are magnificent! Nabeya Bank Ibi River, Late July

MAP C-3(P14)

Summer



Ishidori Festival

This gorgeous festival is called the "noisiest festival in Japan," as about 40 festival wagons resound with the beating of drums and clanging of bells. It is a designated Important Intangible Cultural Asset. Kasuga Jinja Shrine 1st Sunday of Aug. and the previous day

MAP E-1(P15)

Winter



Ise Daikagura

A dance event performed as a dedication to the gods for people who cannot visit Ise Jingu shrine to pray. In this event, the "Shishimai" lion dance is performed by performers wearing a wooden lion's head. Also acrobatics can be seen. Masuta Jinja Shrine Dec. 24

MAP B-3(P14)



1 Clams (Hamaguri)

Kuwana is one of Japan's rare clam grounds. Kuwana's famous Hamaguri are known for their rich and soft texture. Hamaguri have been a delicacy since the Edo Era, and you can try them at many restaurants in the city.

2 Shigureni



This is a sweet and salty dish containing mainly clams and other seafood simmered in plenty of soy sauce and sugar. In contrast to "tsukudani," shigureni is tender. It is a favored souvenir item and many shigureni shops can be found in Kuwana.



Tenobe Udon 4

Udon is a representative noodle of Japan made out of flour and water. In Kuwana, udon is made utilizing the cold wind called "Suzuka Oroshi" blowing down from the Suzuka mountains. It is thick and tender.



3 Clam Onigiri (a clam rice ball) wrapped in meat

This is a new specialty product created by taking shigure rice balls - made by combining rice with clam shigureni; a specialty product commonly eaten at home since olden times - and wrapping them in meat. They are known for their hearty flavor.



5 Japanese Confectionery

Yasunaga Mochi

Because of its history as a former post town bustling with crowds of travelers, Kuwana is home to a large number of stores specializing in wagashi (Japanese confectionery). Enjoy various Japanese confectioneries such as Nerikiri, which is made by adding sugar to white bean paste, and Manju, which is made of bean paste wrapped in a wheat or rice flour dough.



Miyako Manju



Kinton



Oshiruko



Nerikiri

The Tastes of Kuwana



In Kuwana, where the water source is rich and lands are fertile, there are tastes which have been handed down for hundreds of years, as well as new tastes that have come about through ingenuity.

Such tastes of old and new Japan now co-exist. Let's go out to experience eating some of these amazing foods!



Local Beer, Local Sake

6

Japanese sake is brewed alcohol made from rice and its taste is determined by the quality of the water and rice. In Kuwana, where we are blessed with rich nature, tasty local sake is produced. Local beer using 100% organically cultivated malt and hops is also popular.



7 Sukiyaki

This is a type of hot pot dish containing thinly-sliced meat, vegetables and other ingredients cooked in a sweet and salty broth made with soy sauce and sugar. Kuwana has taken pride in the taste of this meat-based dish since olden times. Sukiyaki with top-grade marbled wagyu beef is superb.



The Arts and Crafts of Kuwana

Post town, castle town, port town...
The artisans' craftsmanship which resonates with Kuwana's rich history and culture is worth a look!



1 Kuwana Banko

This is a style of ceramics that has existed for more than 300 years. Flowing with the immutable spirit of Banko Fueki, artisans have created elegant artwork in brilliant overglaze enamels.



2 Kuwana Trays

These trays are made by painting several layers of lacquer on natural wood that is more than 300 years old. A characteristic feature is the turnip drawn onto the round tray. The craftsman's effortless drawing skills are magnificent!



3 Kuwana blades

These blades are forged using the traditional Japanese method of hammering hot iron and steel. The rectangular-shaped, durable and easy to handle vegetable knives are well-known.

Trivia

Sword Craftsman of Kuwana, "Muramasa"

Muramasa, who made Japanese swords known in magical sword legends, lived in Kuwana. His swords continue to be handed down in Kuwana.



5 Paper cranes of Kuwana

This is a style of origami for making multiple linked cranes out of a single sheet of Japanese paper. The technique was invented over 200 years ago by Rokoan Gido, chief priest of a Buddhist temple. There are more than 40 different ways of folding.

4 Japanese Drums

In Kuwana, where good quality wood is available, the production of Japanese drums has been thriving for over 300 years. This wonderful drum is made by skilled craftsmen.



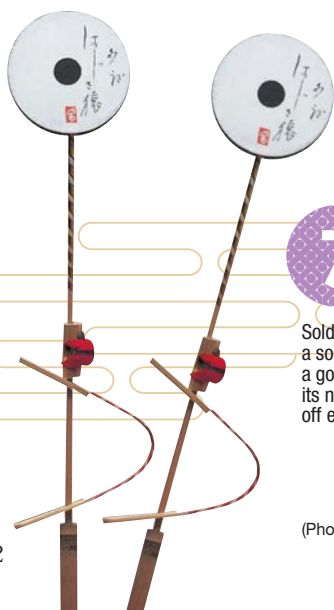
Casting 6

Kuwana is one of the top casting production areas in Japan. It is said that its history has been continuing since the Sengoku Period. Temple gongs and modern-day designed daily goods are still produced here.



7 Hajiki Saru (Good Luck Charm)

Sold at Tado Taisha shrine as a souvenir. This is popular as a good luck charm because of its name and power of warding off evil.



(Photo Provided) 1 Utsuwa no Mise Okura 2 Sohonke Nushikan 3 Hirofusa Uchihamono Ten, 4 Abe Jinbei Taiko Ten 6 Marude Chuki Co. Ltd, Nakagawa Bonsho 7 Miyagawayay

Access Guide



Train

<div>Tokyo</div>	Shinkansen	<div>Nagoya</div>	JR	<div>Kuwana</div>
About 2h 10min. - 2h 30min.				
<div>Osaka</div>	Shinkansen	<div>Nagoya</div>	JR	<div>Kuwana</div>
About 1h 30min. - 1h 45min.				
<div>Chubu Centrair International Airport</div>	Meitetsu	<div>Nagoya</div>	Kintetsu	<div>Kuwana</div>
About 1h 10min. - 1h 20min.				



Bus

<div>Chubu Centrair International Airport</div>	Mie Kotsu Bus	<div>Kuwana</div>
About 55min.		
<div>Nagashima Resort</div>	Mie Kotsu Bus	<div>Kuwana</div>
About 20min.		



Car

<div>Tokyo</div>	Tomei Expressway	Toyota JCT	Isewangan Expressway	Ise Gulf Kuwana IC	National Road	<div>Kuwana</div>
About 4h 30min.						
<div>Osaka</div>	Meishin Expressway	Kusatsu JCT	New Meishin Expressway	Kaneyama JCT	Higashi-Meihan Expressway	Kuwana IC
About 2h						
<div>Chubu Centrair International Airport</div>	Chitahanto Road	Obu IC	Isewangan Expressway	Ise Gulf Kuwana IC	National Road	<div>Kuwana</div>
About 55min.						



Rental Bicycle



How to Use

- 1 Show your ID at the reception and fill in all the necessary information on the registration form. Pay the deposit and receive the key.
- 2 Borrow a bicycle at the rental office and start your journey!
- 3 Return the bicycle to the rental office and lock it up.
- 4 Return the key to the office.

Rental Office Locations

Kuwana City Products
Tourist Information Center

Tel: 0594-21-5416

Sumiyoshiura Rest and Lounge Facility
Tel: 0594-23-3010



Japanese for tourists

[Useful Expressions]

Where am I?	ここはどこですか ▶ Koko wa doko desuka?
How much does it cost?	これはいくらですか ▶ Kore wa ikura desuka?
Which is popular?	どれが人気ですか ▶ Dore ga ninki desuka?
Do you take credit cards?	クレジットカードは使えますか ▶ Kurejitto kado wa tsukae masuka?
Can I take a picture?	写真を撮ってもいいですか ▶ Syashin wo tottemo iidesuka?
Where can I find free wi-fi?	フリーWi-Fiはどこですか ▶ Huli wai-fai wa dokodesuka?
Where can I find a restroom?	トイレはどこですか ▶ Toire wa doko desuka?
To this place, please.	この場所までお願いします ▶ Kono basho made ongai shimasu.

[Helpful vocabulary]

Station	えき ▶ eki
Airport	くうこう ▶ kuukou
Hotel	ほてる ▶ hoteru
Food/Rice	ごはん ▶ gohan
Bread	ぱん ▶ pan
Water	みず ▶ mizu
Bags/Baggage	にもつ ▶ nimotsu
Money	おかね ▶ okane
I/me	わたし ▶ watashi
You	あなた ▶ anata
Yes	はい ▶ hai
No	いいえ ▶ iie



KUWANA CITY MAP

- Tourist Information
- Temple
- Shrine
- Park, Famous Place
- Shop
- Restaurant, Special Product
- Public Facility
- Museum
- Hot Spring
- Golf Course
- Hotel, Japanese Inn
- Public Toilet
- Car Parking
- Free Wi-Fi
- Expressway
- National Road
- Municipal Road
- General Road
- Japan Railway
- Private Railway



Kuwana Station Vicinity Enlarged Map





Copyright Cooperation/Kuwana City Museum



本物力こそ桑名力

Inquires

Kuwana City Economic Environment Department, Commerce Industry Tourism Division 〒511-8601 2-37 Chuo-cho, Kuwana City, Mie
Tel: 0594-24-1231 FAX 0594-24-1140 E-mail: kankom@city.kuwana.lg.jp <http://www.city.kuwana.lg.jp/index.cfm/1,html>

Kuwana City Products Tourist Information Center 〒511-0078 2 Soueicho, Kuwana City, Mie
Tel: 0594-21-5416 FAX: 0594-21-5416

Kuwana City Tourism Association
E-mail: kankokyoukai@kuwana.ne.jp <http://kanko.city.kuwana.mie.jp/index.html>